

BAWBURGH NEWS

Issue 485 Volume 41

£5 per annum

June 2024

Sarah Taylor wins Norfolk Police and Crime Commissioner election

There was a surprise in the Norfolk Police and Crime Commissioner election last month, when Labour won the election for the first time.

Police and Crime Commissioners oversee policing within their police force area and hold the chief constable to account. PCCs aim to cut crime and deliver an effective and efficient police service.

Previously, the post has only been held by conservative and former-conservative candidates.

This year, Sarah Taylor, representing Labour, won the election and now serves in the post for the next four years.

She won with a majority of 1,878.

For more details about what she said she wanted to do, if



elected, visit:
<https://whocanivotefor.co.uk/person/109667/sarah-taylor>

The results

John Crofts, Liberal Democrats	22,525
Giles Orpen-Smellie, Conservative	50,567
Martin Schmierer, Green	23,628
Sarah Taylor, Labour	52,445

Inside this issue

News

- Police and Crime Commissioner election result 1
- Clothes Collection..... 2
- Diamond Wedding 5
- General Election..... 7

Events

- Free Mindfulness course..... 2
- Fete and Duck Race 5
- Coffee Morning..... 5
- 50 / 50 Club 5
- Talks for Everyone 5
- Church Services..... 7
- Social Evening..... 10
- Playgroup 10
- Youth Club 10

Features

- Puzzle Page..... 3
- Bawburgh Voices
 - Kirk and Rita Boswell..... 4
- Doin' Diff'rent
 - The Norfolk Wherry 6
- Bawburgh Cooks 8
- Wild about Bawburgh
 - Brimstone Butterflies 9
- The Garden Shed..... 11

Information

- Birthdays 12
- Useful Information..... 12
- Diary Dates 12

email
news@bawburghvillage.co.uk

facebook
[@bawburghvillagehall](https://www.facebook.com/bawburghvillagehall)

website
www.bawburghvillage.co.uk

Thank you

My last interview for Bawburgh Voices appears this month so I'd like to say a big 'thank you' to everyone who has taken part in the last eight years.

Over a hundred of you have given me your time and answered my questions with good humour and patience. Most of you live in the village, but I've also interviewed former residents, who still have connections with Bawburgh, and non-residents who are very much part of our community, like Tracy our postie. Ray Symonds, who sadly died just after his 90th birthday, had lived in Bawburgh all his life; while Hannah and Sahil Bhardwaj had lived here only four weeks when I interviewed them. The youngest residents I interviewed were eight years old; the oldest was Grace Childerhouse, aged 98.

There's been a great diversity in life experience and occupations; but also many similarities in hopes and concerns for the future, and a shared appreciation of our beautiful village.

By participating in Bawburgh Voices, you've left villagers of the future a wonderful legacy, a unique archive of personal memories of a very special community.

It has been such a privilege to meet you all. Thank you.

Mary

Clothes Collection

The Bawburgh School is participating in a Bags2School clothing collection to help raise funds for our school outside pond area. This is a fantastic opportunity to have a summer clear out and support our students at the same time!

Bags2School will be collecting the following items:

- Clothes
- Paired shoes
- Handbags
- Hats
- Bags and ties
- Scarves
- Jewellery
- Bras
- Socks and belts
- Soft toys
- Curtains
- Towels
- Bedding

Please ensure all items are clean and in good condition. Your donations will make a significant difference, and every contribution helps not only the school but less fortunate people. The items are exported to various countries worldwide, where thrift markets flourish, providing affordable clothing to disadvantaged individuals.

The Collection Date is Tuesday 25th June, please bring all items bagged into the school on either Monday 24th June or Tuesday 25th June.

They appreciate your support and look forward to raising some money!

Eve Moore

Free mindfulness course for over-65s

The Mindful Life Group is offering online mindfulness courses that are fully funded to support older adults in Norfolk. The course is led by a clinical psychologist who is also a mindfulness teacher. This has been funded by Norfolk Community Foundation to provide free online mindfulness courses to support adults aged 65 and over.

The course is based on the mindfulness-based stress reduction course developed by John Kabat Zin but has been adapted for this population.

They have had really good feedback from participants, and have found that it improves people's attention and memory, as well as reducing loneliness, low mood, stress, anxiety and chronic pain. Many participants have found it simply helps them deal with day-to-day stresses.

They currently have two courses beginning in June which involves one weekly meeting online for two hours over six weeks with the option for participants to extend their practice with their group.

The course start dates and timings are as follows:

6th June 2024 1-3 pm every Thursday for 6 weeks

10th June 2024 10am -12 noon every Monday for 6 weeks.

Places are free but limited to around 15 for each course.

There is more information on their website where participants can make an enquiry and to book

www.the-mindful-life.com



ROGER NORTON
Tree Surgeon

Tree Dismantling • Felling • Crown Reduction

01603 759797 07747 353424
www.rogernorton-treesurgeons.com

Fully Qualified and Insured

RFS
City Guilds NPTC Qualified

facebook

Gardener/Handyman

General garden maintenance and outdoor repairs.

Fence building and repairs

For more details contact

Nick Cooper 07788 112113

Puzzle Page: Battleships

Battleships is a logic puzzle based on the Battleships guessing game. In a square grid of 10 x 10 small squares there is an armada of battleships. There is one battleship with 4 squares, two cruisers with 3 squares, three destroyers with 2 squares and four submarines with 1 square. Each ship occupies a number of connected spaces on the game board, arranged either horizontally or vertically. The boats are placed so that no boat touches another boat, even diagonally.

The numbers at the bottom and right of the grid indicate how many spaces are occupied by ships in the corresponding rows and columns.

Occasionally, some squares contain predetermined ship or water segments as a clue to help you get started with the puzzle. The goal is to work out where all the ships are.

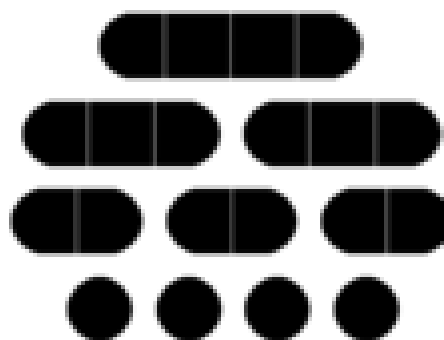
This is a medium version.

The solution is on page 11.

Battleships - Medium

										0
●										2
										2
										1
										1
							●			4
			●							3
										1
										2
										4
2	1	1	2	0	6	0	1	0	7	

<https://sudoku-puzzles.net/battleships-medium/607/>



Like to advertise in Bawburgh News?

An advert this size would cost you £45 per year or £5 per edition.

You would reach over 220 households in Bawburgh.

For more details contact Lesley Ely on 07792222942 or email at

lesley_fivearches@msn.com



Harveys butchers has been providing meat and game to East Anglia since 1924. Purveyors of guaranteed, high welfare produced free range, drug free local meats.

UK MAINLAND DELIVERY SERVICE – FRESH TO YOUR DOOR!

- Grass Fed Beef and Lamb
- Free Range Pork
- All recipes are created and produced in house
- Award winning free range poultry
- Complete range of game
- All of our burgers and sausages are gluten free
- Locally produced honey, eggs, chillies, chutneys and Yare Valley oils
- Dry cured bacon and ham

USE CODE NEW15 FOR 15% OFF YOUR ORDER

TEL: 01603 621908
63 GROVE RD, NORWICH NR1 3RL
www.puremeat.co.uk



Talks for Everyone

Entrance, including tea or coffee: £3

Tuesday, 11th June 7:30pm

in the Village Hall

Mary Fewster: Crime and Punishment in Norfolk
Last year Mary Fewster talked to us about the Yarmouth fishing industry. This time she will tell us some of the crimes committed in Norfolk since the Middle Ages, and the variety of punishments exacted for these crimes. She will look at surviving buildings and artifacts, from Norwich Castle as a prison, to ducking stools. Her talk considers the changing attitudes to punishment, and the development of the police force.

Tuesday, 9th July 7:30pm

in the Village Hall

Anne Edwards will talk to us about the management of wildlife in the churchyard of All Saints, Hethel.

Mary, Jenny and Lin

Duck Race

This year, the annual fete and duck race will take place on Saturday 13th July.

If you are able to help, please let the Village Hall committee know on:

Bawburghvhevents@gmail.com

50 / 50 Club Winners

In May, the 50 / 50 Club winners were:

- Red Sprong
- Gwyneth Boswell
- Debbie Dray
- Noel Gilbert
- Jane Ratcliff.

Well done to all involved.

Diamond Wedding

Brenda and Rex Bell will celebrate their sixtieth anniversary on 13th June 2024. They were married in Bawburgh Church on 13th June 1964. Brenda was born in Bawburgh and she and Rex have lived at Church Cottage for thirty years.

Coffee Morning

The May Coffee morning was splendidly full on a sunny day and £100 was taken.

The next Coffee Morning will be on Saturday 1st June from 10:30am.

Everyone is very welcome.




**DOWNES
ROOFING**
SPECIALISTS

for advice and estimates
call us on
07899916136 07775885239



**Chapelfield
VETERINARY
PARTNERSHIP**

Appointments
Mon-Fri 9-11am 2-3pm
Open Surgery
Mon-Fri 4-6pm Sat 8-10am

- Surgical & Dental Procedures Phone to arrange
- Visits Phone to Arrange
- X-ray, Endoscope & Ultrasound facilities available

Chapelfield Veterinary Surgeons
162 Norwich Road, Costessey, Norwich NR5 0EH
Tel: 01603 743725 Fax: 01603 745605
email: cvp@ukgateway.net www.chapelfieldvet.co.uk
Emergency Out of Hours: 01603 743725 /481403



SOOTS
CHIMNEY SWEEP

Friendly, prompt, clean & tidy service
Sweeping certificates issued, fully insured

SWEEPS INSTALLATIONS
Paul & Leon

07510 237290 07879 333395
pauljmay77@gmail.com

 In association with Natural Heating 

REGISTERED MEMBER
www.instituteforchimneysweeping.co.uk



**KINGS
HEAD**
BAWBURGH

6 New Boutique Rooms
Harts Lane, Bawburgh, NORWICH NR9 3LS 01603 744977
www.kingsheadbawburgh.co.uk

Doin' Diff'rent : The Norfolk Wherry

The predecessor to the wherry was a boat called the keel, but it wasn't very manoeuvrable and the last keel was discovered in 1912 at Whitlingham. It was superseded by the brightly painted wherry, with its single black, easy to lower sail and mast.

Before the First World War the Norfolk wherry was a common sight around the shallow broads and waterways of Norfolk and Suffolk. Until roads became well maintained, water was an important way to transport goods. Among the cargo the wherry carried was thatching, timber and, very importantly, ice, which was needed by the fishing industry, to keep the catch fresh. The ice was cut and stored in ice-houses in the winter, to be ready for warmer weather.

Many farms dug their own dykes, so that goods could be transported more easily. These man-made waterways have mostly now disappeared. Mrs. Howes, the landlady of The Adam and Eve public house in Norwich, owned a wherry which was also called The Adam and Eve. It was used to transport sand for public house floors.

Work on the wherry was hard, but during the summer, life became a little easier and wherry races were sometimes held on the broads.

As roads gradually became better maintained,



the wherry started to disappear, although a few were used as pleasure boats for the growing holiday trade. In 1949 the Norfolk Wherry Trust was formed, the Albion was bought and restored but she was getting old and needed constant repair. The future started to look bleak, but in 1966 a 'Save the Wherry' week was held, under the patronage of the Duke of Edinburgh, and enough money was raised to save The Albion.

It was thought that this was the last original wherry, until The Wherry Maud was discovered. She had been built in 1899 and originally owned by Jewson Timber Merchants. When she was no longer needed she had been offered for sale for £50, but nobody wanted her, so she was partly sunk, then rediscovered in the 1970s and her rescue began.

Information from a Jarrold & Sons publication for the Norfolk Wherry Trust and from the Wherry Maud Trust. Both have websites.

Jenny Press

 **Sue Garcia**
MOSCOT MEDICAL

CHIROPODIST

Home visits by appointment

Tel: 01603 880477 

Health Professions Council Registered
Member of the British Chiropractic & Fellowship Assoc.

 **Jimmy Burt** 
Plastering Services

No job too big or too small
Friendly reliable service
Over 35 years in trade

Call Jimmy Burt
07803 965406 or 01953 713855

Covering South Norfolk 

Feel Warm, Cosy & Safe
with a Woodburner from Norfolk Woodburners!

Installation of
Wood Burners &
Multi-Fuel Stoves

Chimneys Lined

No Chimney,
No Problem!

Fireplace Build
Works

Main agents for
Parkray, Hunter
& Woolly
Mammoth Stoves 

 *Offering the best local service!*
T: 01508 558147 | M: 07847 426953
E: norfolkwoodburners@outlook.com
www.norfolkwoodburners.co.uk

General Election

To vote in the general Election on Thursday 4th July, you will need a valid photo ID. These are:

- a valid passport issued by the UK, any of the Channel Islands, the Isle of Man, a British Overseas Territory, an EEA state or a Commonwealth country
- a driving licence issued by the UK, any of the Channel Islands, the Isle of Man or an EEA state (this includes a provisional driving licence)
- Voter Authority Certificate (see below)
- a biometric immigration document
- an identity card bearing the Proof of Age Standards Scheme hologram (a PASS card)
- Ministry of Defence Form 90 (Defence Identity Card)
- a Blue Badge
- a national identity card issued by an EEA state
- an Older Person's Bus Pass
- a Disabled Person's Bus Pass
- an Oyster 60+ Card
- a Freedom Pass

There are also some additional IDs accepted which were issued by Northern Ireland or Scotland.

You can apply for a free Voter Authority Certificate by visiting the website:

www.gov.uk/apply-for-photo-id-voter-authority-certificate

You will need a recent passport photo and know your National Insurance Number.

If you are going to be away on 4th July and still want to vote, you can apply for a postal vote before Wednesday 19th June, or you can ask someone else to vote on your behalf by applying for a Proxy vote before Wednesday 26th June.

June Church Services

2nd	11am	Bawburgh Church: Service includes communion and a short walk to St Walstan's Well. The guest priest will be the Canon Bob Baker (retired).
		Following this there will be a light lunch at Bawburgh Village Hall at around 1pm to which all are invited whether they have attended the service or not.
9th	10am	Service of Holy Communion, Easton
16th	10am	All Age Service with Holy Communion, Colton.
23rd	10am	Service of Holy Communion, Marlingford
30th	10am	Service of Holy Communion, Bawburgh

Communion at home can be arranged for those who because of illness or frailty are unable to come to the Sunday service.

If you have any queries about services, baptisms and funerals, you can contact Laura on 01603 744551 or by email at:

eastonbeneficeoffice@gmail.com

You can apply for a postal vote at:

www.gov.uk/apply-postal-vote

Or a proxy vote at:

www.gov.uk/apply-proxy-vote

NORFOLK PLUMBING

(East Anglia) Ltd

Domestic Installation & Repairs

Emergency calls welcome

Bathrooms & Kitchens

- Basins
- Toilets
- Baths
- Showers
- Tiling

Repairs

- Blocked drains / Jetting
- CCTV Surveys
- Leaks and more...

Heating

- Radiators
- Powerflush
- Pumps
- Cylinders

Alan Cooper
Tel: 07950471139
ac.norfolkplumbing@googlemail.com

WHEREVER,
WENN-EVER...



DOMESTIC - COMMERCIAL
- AGRICULTURAL - INDUSTRIAL

MINI - MIDI - LARGE
- EXTRA LARGE SKIPS
WITH DOORS

01603 881292

SKIP, TIPPER &
GRAB HIRE

www.normanwenn-skiphire.co.uk
 Email: info@normanwenn-skiphire.co.uk
 Unit 2, Frans Green Industrial Est, Sandy Lane,
 East Tuddenham, Dereham, Norfolk, NR20 3JG



Local independent business - Free estimates

Repairs to double glazed windows, doors and conservatories

Steamed up windows, broken handles, hinges, replacement gasket, plus cat flaps, door panels and more.

01603 520136 or 07581 081636

sandcwindows@gmail.com www.sandcwindows.co.uk

Bawburgh Cooks

Last month Sahil Bhardwaj (Bawburgh Voices, October 2023) gave us his recipe for Butter Chicken. This month Hannah, his wife, offers a vegetarian recipe for courgettes which are now in season in the UK, or maybe growing in your own garden! So do try:

Hannah's Courgette Burgers

Serves 2 as a main course; 2 – 4 as a side-dish

Ingredients

2 - 3 courgettes
Fresh herbs - mint and parsley or others of choice
100 g Feta cheese or other cheese of choice

Seasoning (salt pepper and any other of choice)
An egg (or 2 depending on quantity of courgette)
Tbsp of flour

Method

Lay a clean tea towel out on a kitchen surface. Shred courgettes into this using a grater.

Roll courgettes up in the tea towel; press or squeeze out as much moisture as possible.

Chop herbs finely; put herbs and courgettes into a bowl.

Add egg, flour, seasoning, crumble in the cheese and mix.

Add more egg and flour if the mixture doesn't hold together.

Make burger-sized balls - either scoop heaps with a spoon or squish together with hands.

Either fry: add a small amount of oil to a pan on

medium heat; fry the courgette balls for a few minutes on each side until golden-brown and crispy.

Or bake: on a tray at 200°C (Fan oven at 180°C) for 20-30 minutes, or in air fryer at 180°C for 20 minutes. Line the tray with greaseproof paper/tinfoil to prevent burgers sticking.

To serve: Add a dipping sauce of choice if you wish, or have alongside other dishes; also great as a BBQ addition!

Next month: Pamela's Chocolate-and-Honey Cake. If you'd like to join the team and contribute one, or more, of your favourite recipes please get in touch.

Mary Wilkinson, mary01@clara.co.uk

GARDENING HELP WANTED

IN A BAWBURGH GARDEN

2 – 3 hours a fortnight

PHONE : 07947 526819

City Tree & Hedge		City & NPTC Guilds Qualified
Trees Felled – Reduced – Thinned – Deadwooded		
Shrubs & Hedges Trimmed – Reduced – Removed		
Garden Clearance / Stump Removal		
07591 306 358		
info@citytreeandhedge.co.uk		



John Innes

May is always a busy month at Church Farm with any final sowing of trials involving such crops as potato, maize or soybean. There is also plenty to do with earlier sown trials with agronomic inputs to be applied and the start of key trait assessments such as flowering dates and disease susceptibility. Unbelievably after the winter and early spring that we have had it is also the month that we start to think about irrigation.

comms@jic.ac.uk



Darryl Playford

darryl.playford@jic.ac.uk

Wild about Bawburgh: Brimstone Butterflies

We often see the large yellow Brimstone butterflies (approximately 60 to 70 mm wingspan) flying during a sunny day in our village hedgerows and gardens. If you are lucky enough to see one settle, their wings when closed resemble leaves.

The smaller yellow Brimstone moth (approximately 45mm wingspan) is more reclusive as it emerges at dusk and flies by night. Recently I came across one in Neita Sparke's porch. Neita has a night light in her porch and moths are often attracted to it during the night and then are content to remain there at rest during the daylight hours. Smaller than the butterfly, the brimstone moth is also a beauty, with chestnut-brown-markings on the tips of its lemony-yellow wings.



to see that the ponies at Southern Park, Bowthorpe, have started having their babies. The picture shown is of two foals, both with their mums and under a day old. The one on the right of the picture was still sorting its legs out, after being cramped in mum's womb. I'm glad to say that the day after it was gallivanting round the field with its playmate, nearly running me and my dog over.

Mum wasn't at all worried – she just kept on eating!

Lin Gibson

With warmer temperatures now becoming the norm, the brimstone moth can be seen flying from April to October and during this time can have 2 or even 3 broods of caterpillars. These twig-like 'looper' caterpillars grow to about 32mm in length and are very variable in colour, reflecting the foodplant they are feeding on, which includes a wide variety of deciduous trees, including hawthorn and blackthorn. They are very distinctive in having a wart on the middle of their backs. Caterpillars will pupate in the leaf litter under the trees or may even overwinter as caterpillars. Depending on the time of year, and the temperature, the adult moths will emerge within 2 to 4 weeks.

This is a wonderful time of year. I was delighted



Martin's

Carpets Ltd





FREE

Measure & Estimate

FREE

Fitting Service

📍 Based in Easton

Supplying and fitting carpets and vinyl flooring *for over 30 years*





- ✓ Home visit with samples
- ✓ Carpets and vinyls
- ✓ Floor preparation
- ✓ Furniture removal
- ✓ Door trimming
- ✓ Disposal service

01603 88 00 87

Mobile: 07867 51 87 48

Email: info@martinscarpetsltd.co.uk

Web: www.martinscarpetsltd.co.uk

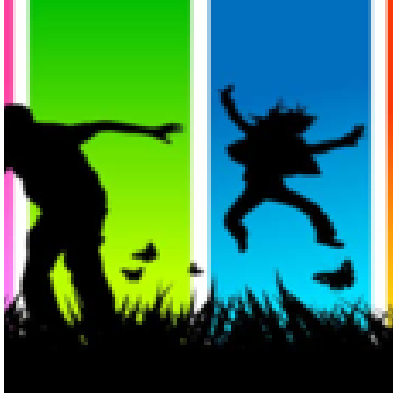
Facebook: [martinscarpetsltd](https://www.facebook.com/martinscarpetsltd)

Customer satisfaction is our priority.

Youth Club

Meets on the last Friday of every month from 6:15pm – 8:00pm (for children of 6 years and above). £2.50 entry per child.

Friday 28th June



Contact: Sarah Lambiase at school

Social Evening

at Bawburgh Village Hall on
Friday 14th June 2024
from 6:30pm until at least 9:30pm



Licensed Bar/Darts/Table Tennis/Pool
Contact: Colin Clark

Bawburgh playgroup

Takes place every Friday during term time at the Village Hall from 9:30am to 11:00am. Entry £1.50 (£2 for two children) includes snack for the children and tea/coffee for parents

Contact:

Jo on 07840384646

jocarlick2016@hotmail.com



Carl Pigott

Professional Painter & Decorator

Full Public Liability

Tel: 01603 461043
Mob: 07787 156660



 **CJ Gutters**
Gutter Cleaning Service

Local, reliable and cost effective

We use vacuum equipment to ensure the best gutter clean

Every job has a video camera survey to ensure your gutters are kept in top condition

Call Johnny or Charlie
07857420448 for a quote



Auber Electrical Ltd

For all your electrical needs
call **PAUL** on
Mobile: 07850 875941

"Your Friendly Local Electrician"

The Garden Shed - June

Dead-head roses – at least once a week, to stimulate fresh side shoots and the production of new flower buds. Use a pair of secateurs and cut back to the first leaf below the spent flower. A new shoot will grow from this point.

Prune Wisteria – When wisteria has finished flowering - usually around the middle of June - prune all this year's new shoots back to a spur leaving no more than about 6 inches of growth. New growth will emerge from the spurs. The whole plant can be tidied, trained and tied in so that there are no loose, trailing shoots. If there is any doubt about how hard to prune err on the side of cutting too lightly and then in the new year, when the foliage has all died back, you can prune again, reducing each side shoot to just 2 or 3 inches.

Prune early flowering shrubs - such as Philadelphus, Amelanchier, Deutzia, Weigelia and Rubus, which all produce their flowers on shoots grown the previous summer and so should be pruned now. This gives the new growth plenty of time to ripen before winter and produce maximum flowers next spring.

Prune mature plants hard, cutting back most of the flowering stems to a healthy new shoot and taking the oldest growth (but no more than a third of the plant) right back to the base so it is completely renewed every three or four years. Young shrubs should have the weakest growth cut back with the remainder pruned just to shape and size.

Water and mulch with compost after pruning and take semi-ripe cuttings from healthy, straight non-flowering stems.

Hedges - It is too early to cut hedges because not all young birds have left the nest, but you can trim straggly growth purely for tidiness. Then, in a month's time, the hedges can have a proper trim.

Box hedges – If your Box hedge has not succumbed to box blight or box moth caterpillar, then early June is the best time to give it a trim. Use very sharp shears to avoid tearing the edges and do it when you know there will be a few days of dry weather as cut stems are extra susceptible to the box blight fungus when wounds are fresh.

Sow Biennials - such as Wallflowers, Honesty, Foxgloves, Forget-me-nots and Aquilegias. They will grow fast from seed and develop strong roots and foliage ready to flower next season. Sow them now in a seed tray, pots or in rows in the vegetable plot. Thin out new shoots and plant in pots until ready to position them in the autumn, in the place you want them to grow.

Annuals - tender plants such as Cannas, Dahlias and Salvias, as well as tender annuals like

Tithonias, Cosmos and Zinnias, have been gradually hardened off by now so during June they can be planted out - the nights will be warm enough for them to grow strongly and establish good sized plants ready for their flowering display.

Vegetables – there is just enough time to start a vegetable patch if you haven't already done so!

Tomato plants, courgettes, squashes, runner beans and sweetcorn can all be planted outside now the nights are warming up and aubergines, peppers, melons, cucumbers and more tomatoes grown in a greenhouse.



Keep a succession of lettuce going this month making small sowings every two or three weeks to ensure a steady supply of fresh salad leaves.

Regularly pinch out side-shoots on tomatoes. It is best - and easiest - to do this first thing in the morning when the plant is turgid and they will snap off easily in your fingers.

June Drop – Apple and pear trees reduce the quantity of fruit they carry by indiscriminately 'dropping' some fruit in order to successfully ripen those that remain. Before the tree does this for you, it is a good idea

to selectively remove the smallest fruit. Reduce each cluster on a spur to just two fruits that are not touching each other. These will grow and ripen better as a result.

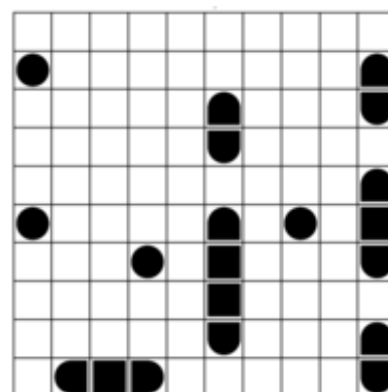
Weeds - June is a month when weeds really kick into action so all vegetable plots need regular weeding and nothing beats a hoe for this. The secret of effective hoeing is to always do it in dry weather and preferably in the morning so that the weeds will cut cleanly from the soil and then dry out and die during the day. They can then be raked up in the afternoon and taken to the compost heap.

With thanks and acknowledgements to Monty Don. For more tips and advice visit www.montydon.com

Marion Malone

Puzzle Page:

Solution



Useful Numbers

Police: Emergencies 999
non-emergencies 101
101 is available 24 hours a day, seven days a week.

Wymondham Police Station: 01953 424242

N.H.S. Direct: 111

Bawburgh Parish Clerk: Nicola LeDain
07855 947797
pc@bawburghvillage.co.uk

Bawburgh Parish Chairman:
Peter Markham
01603 811339

Vicar: Rev. Laura Montgomery 01603 744551

Village Hall Bookings: Kathy Watchorn
bookings@bawburghvillage.co.uk

Bawburgh School: 01603 742329

Road problem reporting:
www.norfolk.gov.uk/roads-and-transport/
roads/report-a-problem

Our Bus

Monday, Wednesday and Friday

The 806A leaves the Kings Head at 10:00am and goes to Wymondham, arriving at 10:37am

It returns from Wymondham at 12:18pm and gets back to the Kings Head for 12:55pm

Tuesday and Thursday

On a Tuesday and Thursday, the 808 leaves the Kings Head at 9:14am. It travels to Longwater and arrives at 9:32am in time to catch a connecting bus to Norwich City Centre.

There are two return buses. The first leaves at 11:15am and gets back to the Kings Head at 11:33am.

The second bus leaves Longwater at 12:50pm and gets back to Bawburgh at 1:06pm.

Park & Ride – is managed by Konectbus.
www.konectbus.co.uk 0330 0539358.
510 serves Hospital and 511 the University ONLY from Costessey Park and Ride.

Thickthorn Timetable: first bus to City Centre (Bus Station) from 0635 Mon-Fri, 0700 Sat. 0915 Sun

Last bus from City Centre (Bus Station) to Thickthorn P&R 1930 Mon-Fri (later on Thursdays), 1845 Sat. 1720 Sun.

Please note that Bawburgh News copy date

is the 20th of each month

or earlier if possible, please.

Check your village Website at:

www.bawburghvillage.co.uk

Diary dates

June 2024

Sat	1st	10:30am	Coffee Morning (Village Hall)
Sun	2nd		St Walstan's Day
Tue	4th		🗑️ Grey bin collection
Fri	7th	9:30am	Playgroup (Village Hall)
Fri	7th		🗑️ Brown bin collection
Tue	11th	7:30pm	Talks for Everyone (Village Hall)
Tue	11th		🗑️ Green bin collection
Thu	13th		Mobile Library:
		9:35am	Stocks Hill
		10:00am	Church Street
Fri	14th	9:30am	Playgroup (Village Hall)
Fri	14th	6:30pm	Social Evening (Village Hall)
Tue	18th		🗑️ Grey bin collection
Wed	19th		Deadline to apply for Postal Vote
Fri	21st	9:30am	Playgroup (Village Hall)
Fri	24th		🗑️ Brown bin collection
Tue	25th		🗑️ Green bin collection
Wed	26th		Deadline to apply for a Proxy Vote.
Fri	28th	9:30am	Playgroup (Village Hall)
Fri	28th	6:15pm	Youth Club (Village Hall)

Bawburgh News Team

Editor: Rob Anthony, Andante, Stocks Hill

01603 810141

news@bawburghvillage.co.uk

Distribution: Nic Lord

nicjl13@btinternet.com

The Garden Shed: Marion Malone

mfmalone99@gmail.com

Subscriptions: Rosemarie Robinson

01603 749777

rosemarierobinson44@gmail.com

Advertising: Lesley Ely

07792222942

lesley_fivearches@msn.com

Doin' Diffrent: Jennifer Press

jenny.press@hotmail.com

Voices: Mary Wilkinson

mary01@clara.co.uk

Wild About Bawburgh Lin Gibson

linhargreaves@hotmail.com

Bawburgh Cooks: Mary Wilkinson

mary01@clara.co.uk